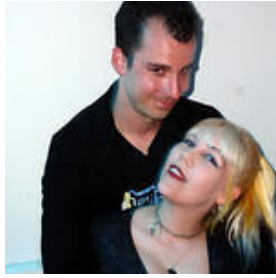


# Mark



[VDay 3](#)



[Heidi, Mark](#)



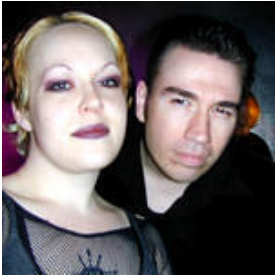
[PA22002](#)



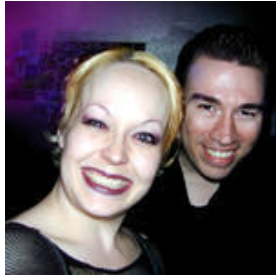
[George, Melissa, Mark](#)



[Mark](#)



[M & Mark Sharp](#)



[M & Mark](#)



[mark\\_composed](#)



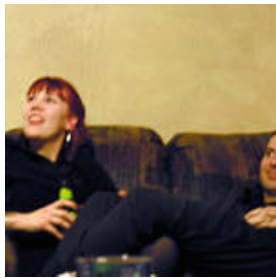
[Mark](#)



[Mark](#)



[marksharp](#)



[Heidi & Mark](#)



[Mark](#)



[Heidi & Mark](#)



[Mark & Heidi](#)